

# COMPANY PROFILE



**PT.TOADA MITSU INDONESIA**

*Smart Electroplating Company*

<https://toadamitsuindonesia.com/>

## Company Information

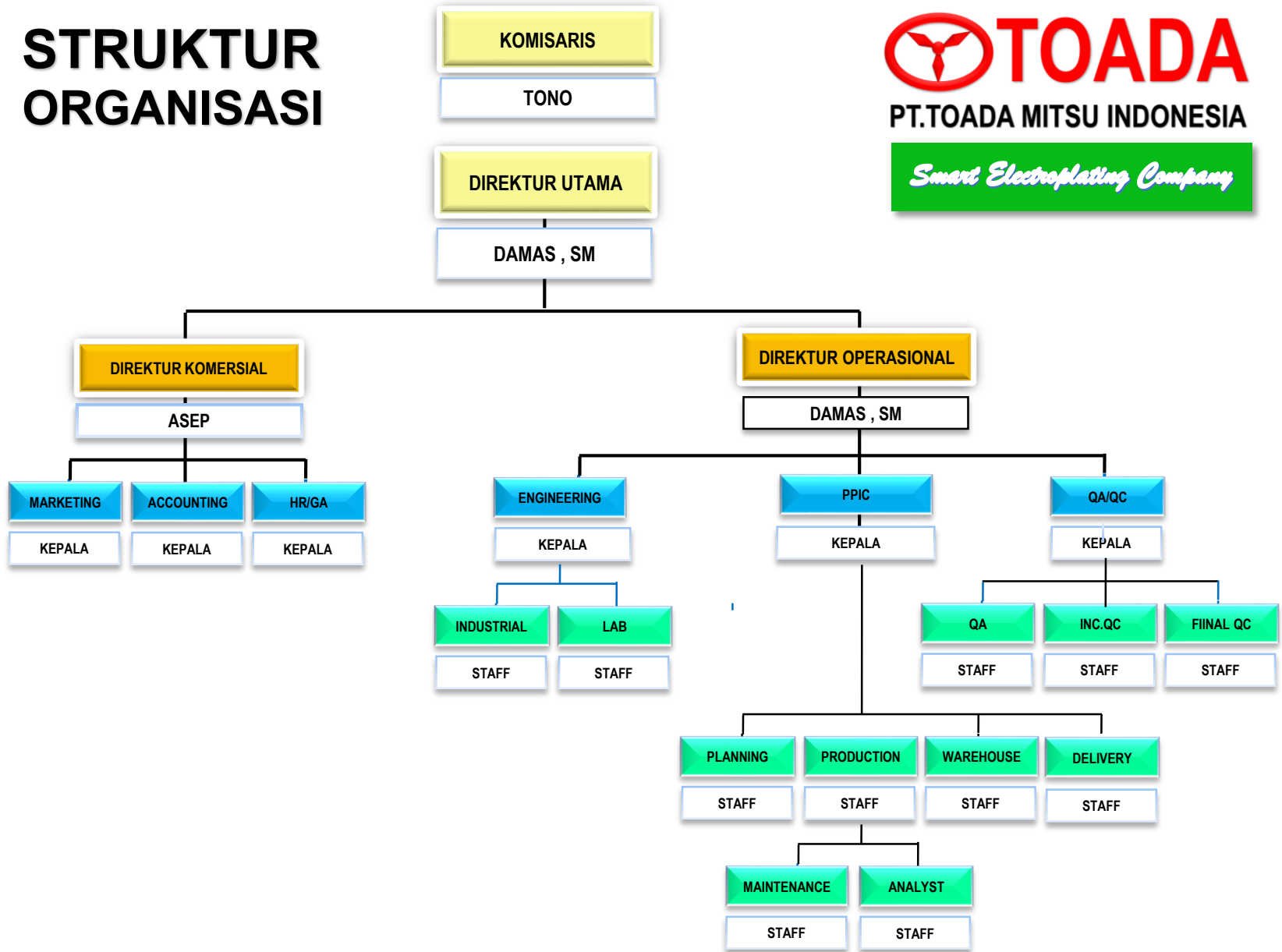
<b>Nama Perusahaan</b>	<b>:</b>	<b>PT. TOADA MITSU INDONESIA</b>
<b>Direktur Utama</b>	<b>:</b>	<b>Damas,SM</b>
<b>Akta Notaris</b>	<b>:</b>	<b>Dalam Proses</b>
<b>NIB</b>	<b>:</b>	<b>Dalam Proses</b>
<b>NPWP</b>	<b>:</b>	<b>Dalam Proses</b>
<b>SPKP</b>	<b>:</b>	<b>Dalam Proses</b>
<b>Status Penanaman Modal</b>	<b>:</b>	<b>PMDN</b>
<b>Office &amp; Workshop</b>	<b>:</b>	<b>Alamat : Jalan Kemuning Raya No.75 RT.001 / RW.005 Bojong Menteng ,Kec.Rawalumbu Kota Bekasi-Jawa Barat 17117</b>
<b>Website</b>	<b>:</b>	<b><a href="https://toadamitsuindonesia.com/">https://toadamitsuindonesia.com/</a></b>
<b>QMS</b>	<b>:</b>	<b>On Progress IMPLEMENTATION ISO 9001-2015</b>

## Our Location

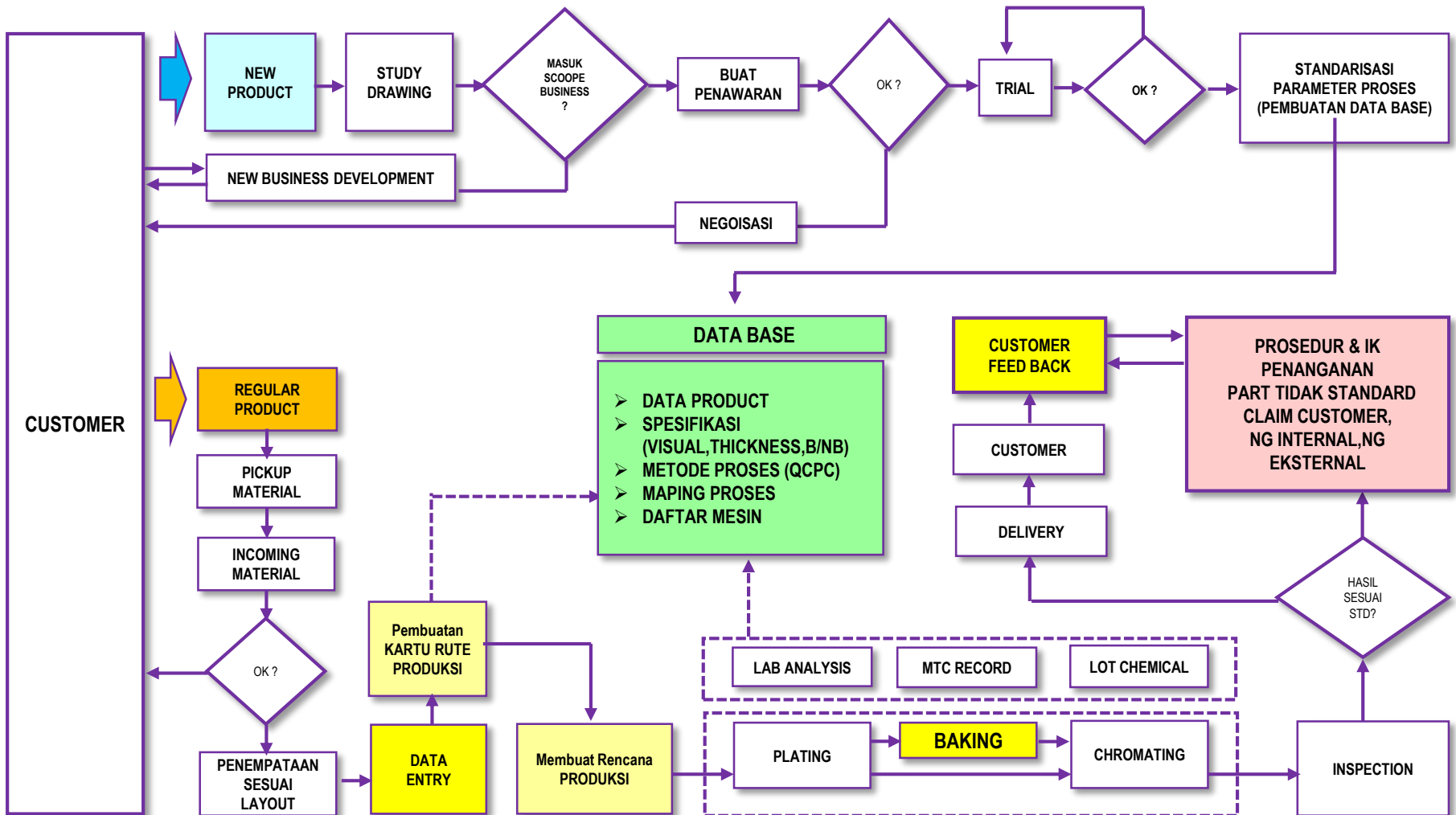


Alamat : Jalan Kemuning Raya  
No.75 RT.001 / RW.005 Bojong  
Menteng ,Kec.Rawalumbu Kota  
Bekasi-Jawa Barat 17117

# STRUKTUR ORGANISASI



**QA DIAGRAM / FLOW CHART TRACEBILTY**



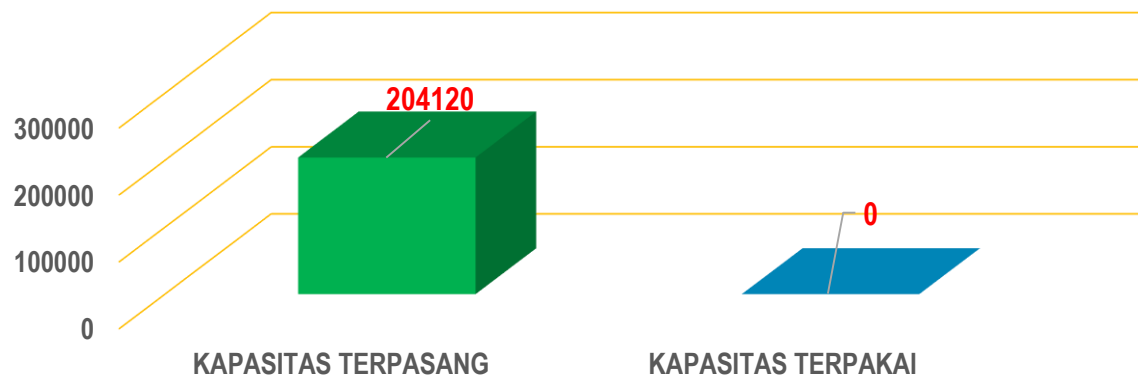
**JENIS PRODUK / LAYANAN KAMI**

NO	JENIS PROSES	SPESIFIKASI MESIN	JENIS PLATING	WARNA CHROMATING	KETERANGAN	
					ADA	BELUM ADA
1	Barrel	Full Automatic	Zinc / Zn ( Acid )	White Tivalent	√	
				Yellow Trivalent	√	
				Black Trivalent	√	
2	Barrel	Full Automatic	Zinc / Zn ( Alkaline )	White Tivalent	On-Prgs	√
				Yellow Trivalent	On-Prgs	√
				Black Trivalent	On-Prgs	√
3	Barrel	Full Automatic	Zinc Nikel / Zn.Ni	Blue Trivalent	On-Prgs	√
				Black Trivalent	On-Prgs	√
4	Barrel	Semi Automatic	Cuper / Cu	~	On-Prgs	√
5	Barrel	Semi Automatic	Tin / Sn	~	On-Prgs	√
6	Barrel	Semi Automatic	Perak / Ag	~	On-Prgs	√
7	Rack	Semi Automatic	Hardchrom	~	On-Prgs	√
8	Rack	Semi Automatic	Nikel Chrom/Ni.Cr	~	On-Prgs	√

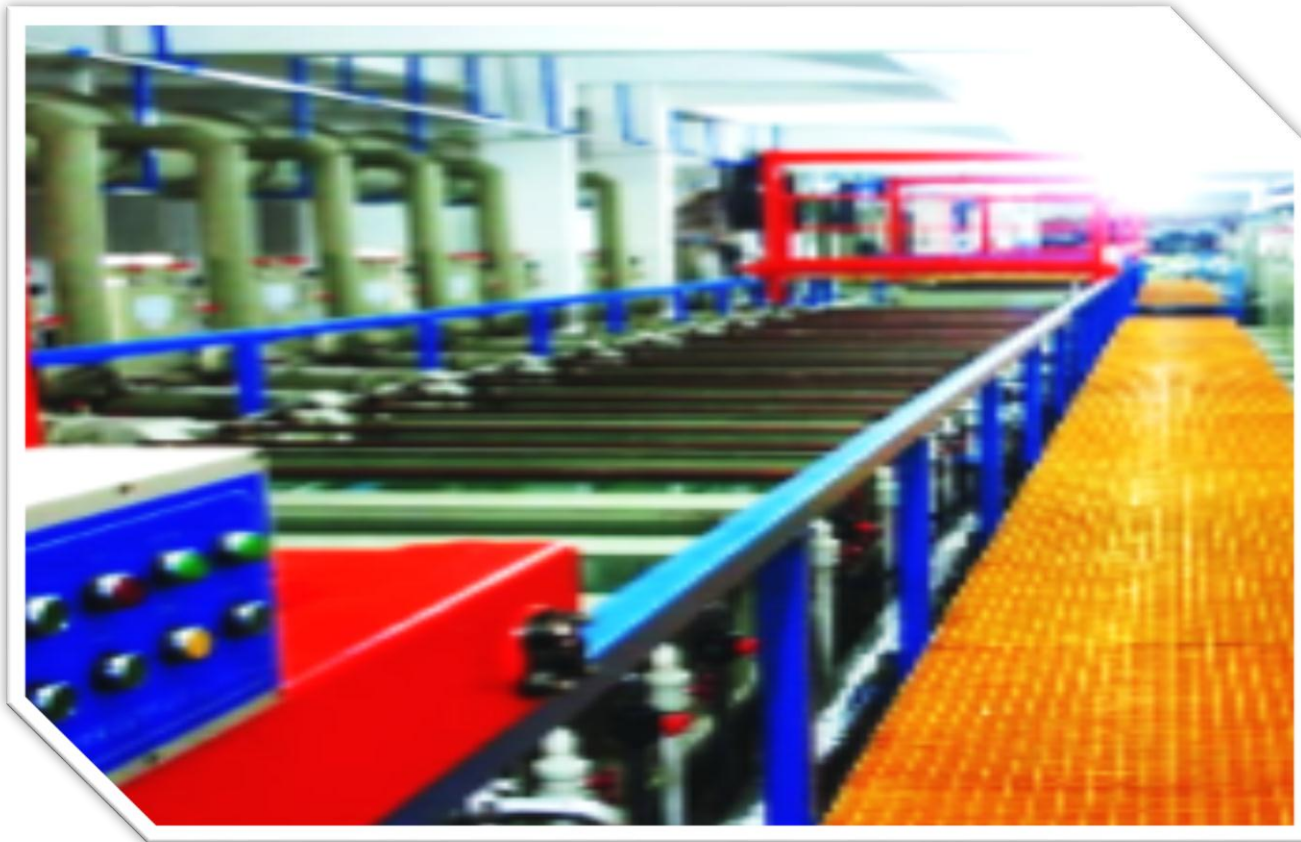
## KAPASITAS PRODUKSI KAMI

NO	TYPE LINE	SPESIFIKASI BARREL	KAPASITAS TERPASANG				KAPASITAS TERPAKAI				KAPASITAS STANDBY (%)
			BARREL / HARI	KG / HARI	BARREL / BULAN	KG / BULAN	BARREL / HARI	KG / HARI	BARREL / BULAN	KG / BULAN	
1	AUTOMATIC BARREL	BRL 90 X 10 LOOP	189	8,505	4,536	204,120	0	0	0	0	0
<b>TOTAL</b>			<b>189</b>	<b>8505</b>	<b>4,536</b>	<b>204,120</b>	<b>0</b>	<b>0</b>	<b>0</b>	<b>0</b>	<b>0</b>

### GRAFIK KAPASITAS PRODUKSI



**MESIN PRODUKSI KAMI / LINE OF PRODUCTION ( PLATING LINE )**





**MESIN PRODUKSI KAMI / LINE OF PRODUCTION ( CHROMATING LINE )**



**MESIN PRODUKSI KAMI / BAKING MACHINE**



**FASILITAS SUPPORTING KAMI – ALAT UKUR & PENGUJIAN**



**THICKNESS TESTER**



**DIGITAL MICROMETER**



**DIGITAL  
MIKROSCOPE**



**SALT SPRAY TEST**

**WASTE WATER TREATMENT ( WWT )**

**UNDER CONSTRUCTION**

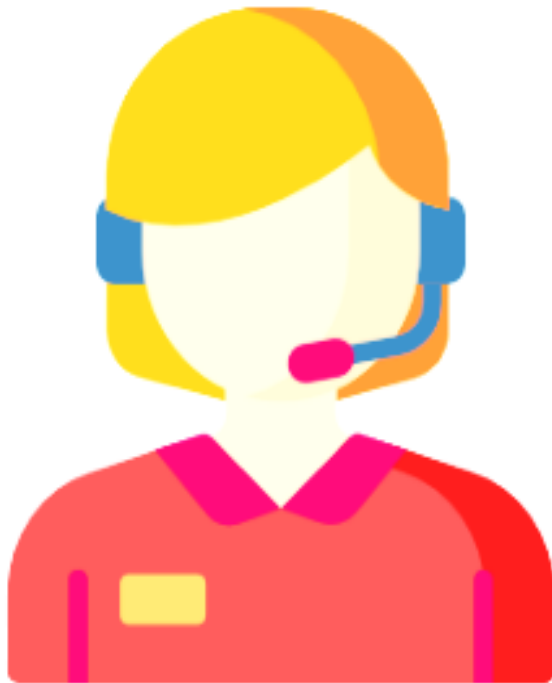
**FASILITAS SUPPORTING KAMI - LABORATORIUM**



**CONTOH HASIL PROSES KAMI**



## **COSTUMER SERVICE**



**021-89090311**



**0877 6881 3500**



**marketing@toadamitsuindonesia**



**<https://toadamitsuindonesia.com/>**

